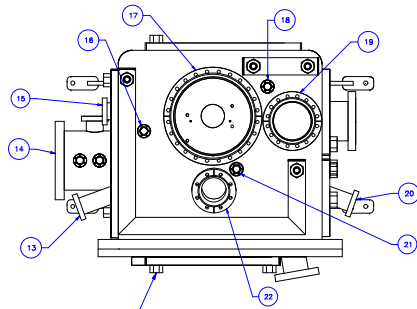
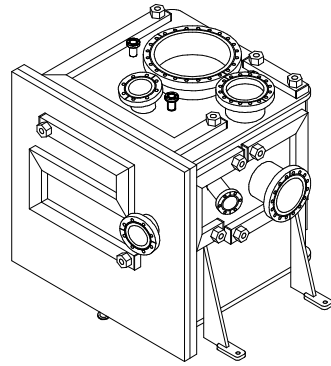
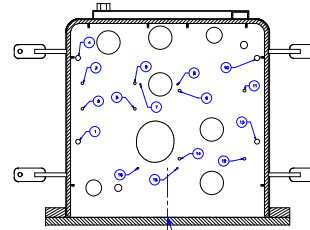


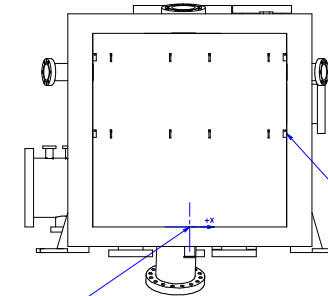
REVISIONS			
REV	DESCRIPTION	DATE	APPROVED
A	ASSEMBLED	4/4/03	



3/8" FEMALE NPT FITTING
SWAGelok P/N SS-8-TSM-7-6
TYP 14 PLACES

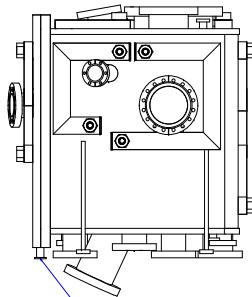


WELDED IN
SEE PORT SCHEDULE

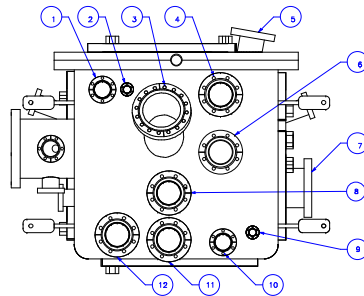
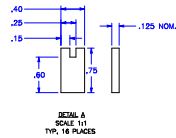
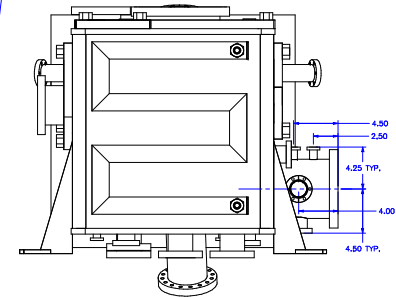
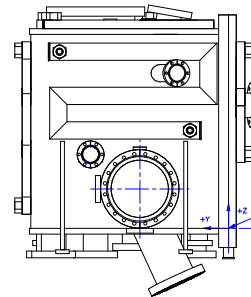
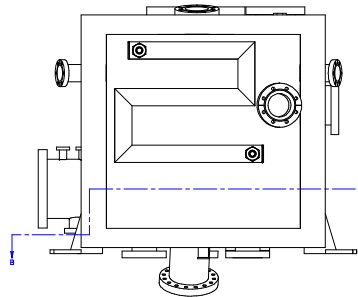


SEE DETAIL A

COORDINATE POINT (0,0,0)



R7.50 FOR DIFFERENTIALLY PUMPED DOOR SEAL



NOTES:

1. ALL VACUUM WELDS TO BE LEAK TIGHT TO A HELIUM SENSITIVITY OF 1E-10 MCC. CC/SEC.
2. INNER SURFACE OF CHAMBER SHALL HAVE A 18 IN. DI. BEVEL FINISH AFTER ELECTROPLATING. EXTERIOR SURFACE TO HAVE #4 IN. DI. BEVEL ELECTROPLUSHED FINISH.
3. SEE DETACHED CHAMBER PORT SCHEDULE FOR INFORMATION ON PORT SIZE AND LOCATIONS.
4. ALL VACUUM WELDS TO BE WETTER.
5. SEE BUT ASSOCIATED CHAMBER PORT SCHEDULE DESCRIPTION # 802190.

DESIGN: B. ROONEY	DATE: 03/01/10	COMPANY NAME HERE
DRAWN: J. ADAM	CHECKED: [Signature]	FILE: XXXXXXX
PROJECT: 304L SSTL	PART: SEE NOTE 2	
DWG. NO.:	SCALE: 1:1	SHEETS: 1 OF 3