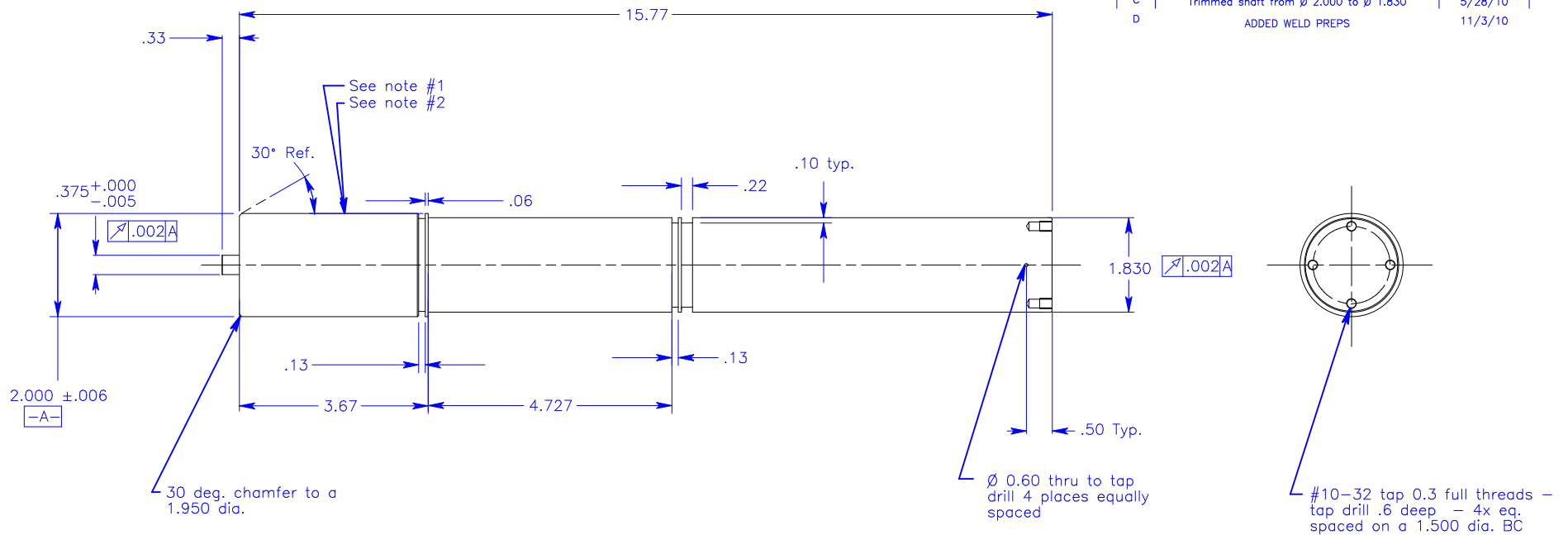


REVISIONS			
REV	DESCRIPTION	DATE	APPROVED
A	ADDED CHAMFER, VENT HOLES AND CHANGED LENGTH OF SEAL SURFACE FROM 3.99 TO 4.5	5/11/10	BR
B	Revised detail and added hard chrome plating	5/28/10	DLT
C	Trimmed shaft from $\varnothing$ 2.000 to $\varnothing$ 1.830	5/28/10	BR
D	ADDED WELD PREPS	11/3/10	BR



Note  
 1-Outer diameter to be free of scratches or other defects in this area - (this area to be used for water seals). 16 RA or better.  
 2-Hard Chrome plate part .001/.0015 thick.

DEFAULT TOLERANCES: INCHES POSITION: .X ±0.030 .XX ±0.010 .XXX ±0.005 ANGLE: X° ±0.5° MACHINED SURFACE: 63 REMOVE ALL BURRS AND BREAK SHARP EDGES 0.010 MAX. THIS DRAWING CONTAINS PROPRIETARY INFORMATION AND ANY REPRODUCTION, DISCLOSURE OR USE OF THIS DRAWING IS EXPRESSLY PROHIBITED EXCEPT AS SVT ASSOCIATES MAY OTHERWISE AGREE TO IN WRITING.	DRAWN BY: B. ROONEY CHECKED BY: APPROVED BY: MATERIAL: CDA 101 COPPER FINISH: SEE NOTES SUBASSEMBLY OF: DWG. NO.:	DATE: 3/19/10 DATE: DATE: DATE:	COMPANY NAME HERE TITLE: XXXXXXXXXXXXX CHARGE CODE: B DWG NO.: XXXXXXX REV D SCALE: .5 WEIGHT: 16# SHEET: 1 OF 1
---	--	--	---